

NORTHWEST CORNER
SECTION 9, T2N, R4W
LIBER 3 PAGE 581
NORTH LINE OF SECTION 9
558.00'

PACKARD HIGHWAY
NORTH 1/4 CORNER
SECTION 9, T2N, R4W
LIBER 3 PAGE 580
2089.55'

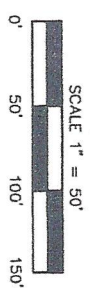
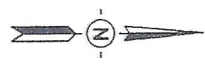
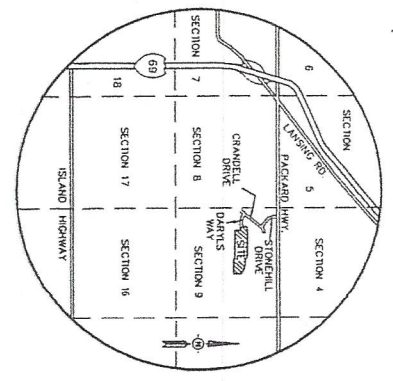
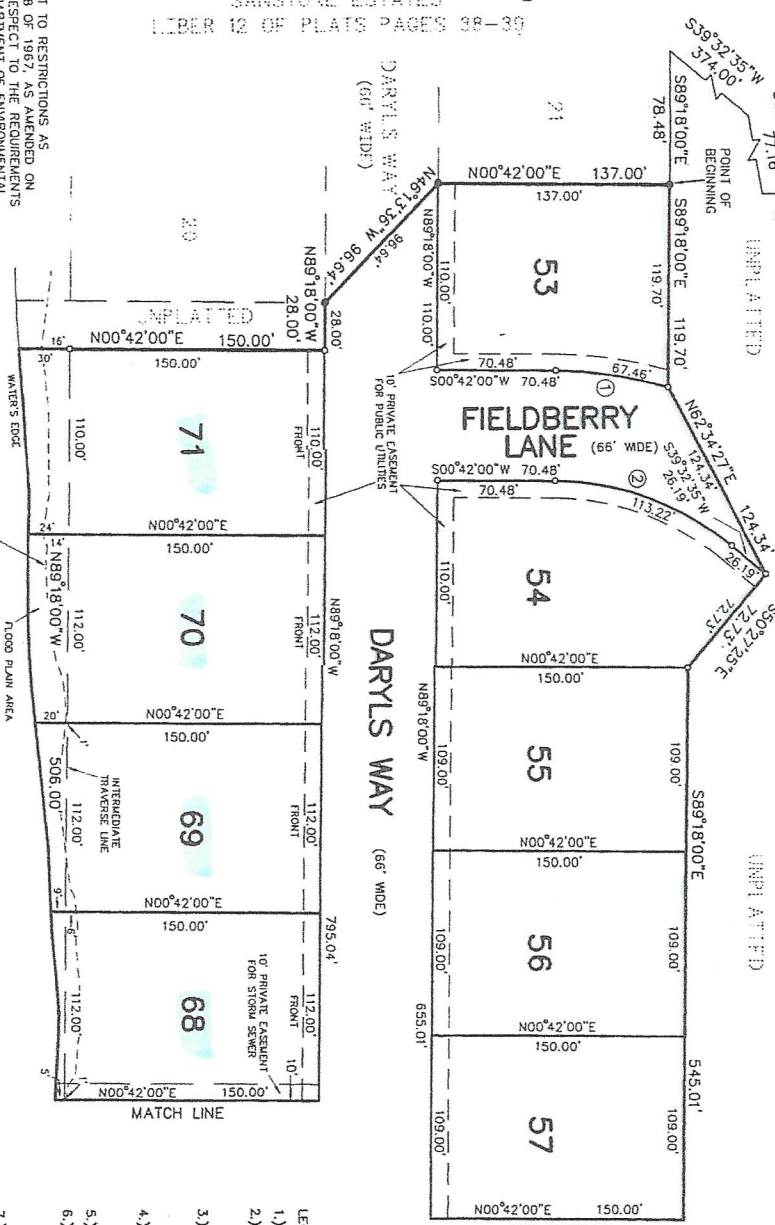
SANSTONE ESTATES
LIBER 12 OF PLATS PAGES 98-100



SANSTONE ESTATES
LIBER 12 OF PLATS PAGES 98-100

SANSTONE ESTATES NO. 3 A SUBDIVISION OF PART OF THE NORTHWEST 1/4 OF SECTION 9, T2N, R4W, CITY OF CHARLOTTE, EATON COUNTY, MICHIGAN

CURVE	RADIUS	LENGTH	CHORD	BEARING	DELTA
1	233.00'	67.46'	67.23'	S08°59'41"W	15°43'43"
2	167.00'	113.22'	111.06'	S00°07'18"W	37°29'32"



- LEGEND:
- 1.) ALL DIMENSIONS ARE IN FEET AND DECIMALS THEREOF.
 - 2.) STEEL BARS 1/2" IN DIAMETER 36" LONG ENCASED IN CONCRETE 4" IN DIAMETER HAVE BEEN PLACED AT ALL CORNERS MARKED "C".
 - 3.) STEEL BARS 1/2" IN DIAMETER 36" LONG ENCASED IN CONCRETE 4" IN DIAMETER HAVE BEEN FOUND AT ALL CORNERS MARKED "C".
 - 4.) LOT CORNERS HAVE BEEN MARKED WITH STEEL BARS 1/2" IN LENGTH BY 1/2" IN DIAMETER WITH A PLASTIC CAP MARKED "CEBS 25832 31588 41095".
 - 5.) ALL CURVE DIMENSIONS ARE ARC MEASUREMENTS.
 - 6.) ALL BEARINGS ARE DERIVED FROM THE NORTH LINE OF SECTION 9 WHICH IS RECORDED TO BEAR S89°50'00"E ON THE PLAT OF SANSTONE ESTATES, AS RECORDED IN LIBER 12 OF PLATS, PAGES 98 & 99, EATON COUNTY RECORDS.
 - 7.) "R" INDICATES RADIAL LOT LINE, "NR" INDICATES NON-RADIAL LOT LINE.
 - 8.) LOT LINES EXTEND TO THE WATER'S EDGE.

THIS PLAT IS SUBJECT TO RESTRICTIONS AS REQUIRED BY THE MICHIGAN DEPARTMENT OF ENVIRONMENTAL QUALITY AND/OR THE MICHIGAN DEPARTMENT OF PUBLIC HEALTH, WHICH ARE RECORDED IN LIBER 1474 PAGE(S) 554-576 OF RECORDS OF THIS COUNTY.

FLOOD PLAIN CONTOUR AS ESTABLISHED BY THE MICHIGAN DEPARTMENT OF ENVIRONMENTAL QUALITY, ELEVATION 884.0, N.C.V. DATUM 1'-6"-2001

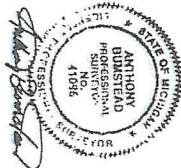
UNNAMED POND

SANSTONE ESTATES NO. 3 A SUBDIVISION OF PART OF THE NORTHWEST 1/4 OF SECTION 9, T2N, R4W, CITY OF CHARLOTTE, EATON COUNTY, MICHIGAN

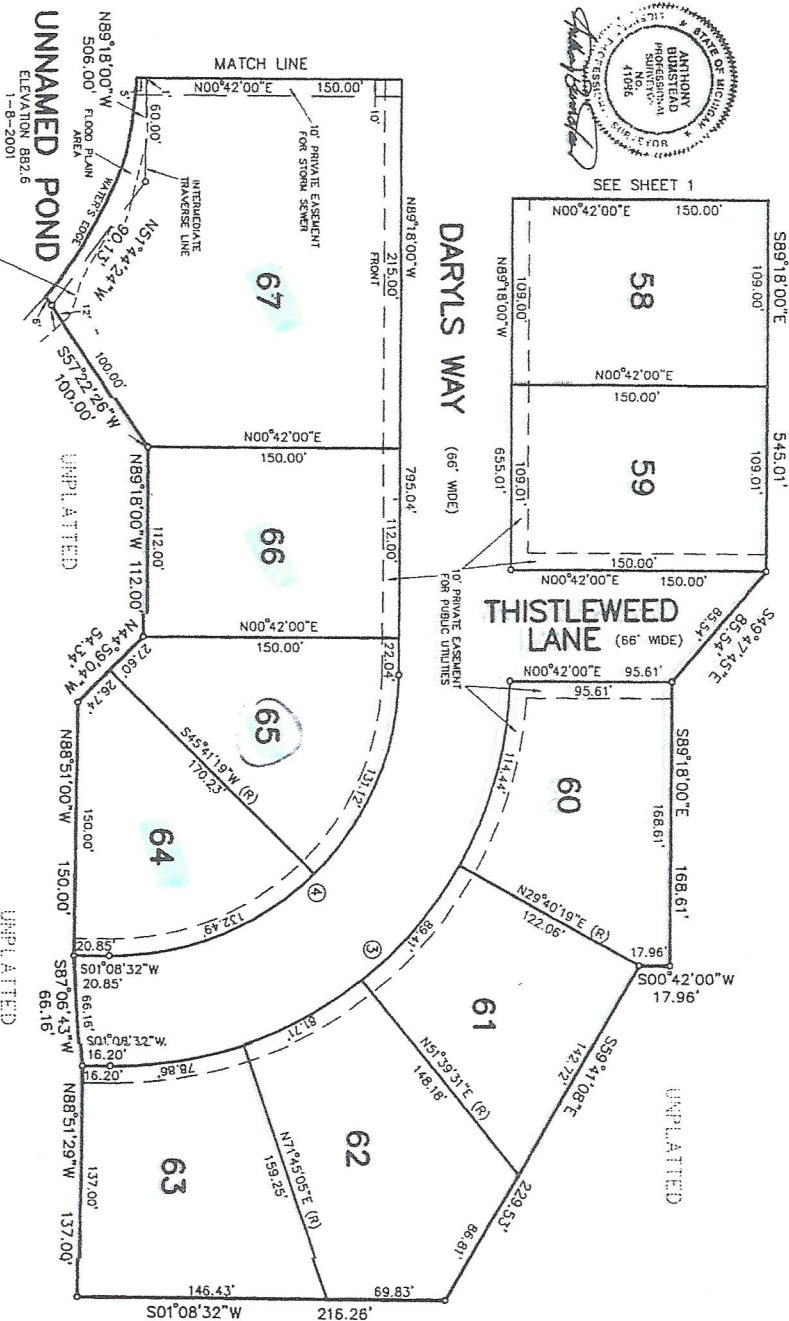
waterfront

THIS PLAT IS SUBJECT TO RESTRICTIONS AS
REQUIRED BY ACT 288 OF 1967, AS AMENDED ON
CERTAIN LOTS WITH RESPECT TO THE REQUIREMENTS
OF THE MICHIGAN DEPARTMENT OF ENVIRONMENTAL
QUALITY AND/OR THE MICHIGAN DEPARTMENT OF
PUBLIC HEALTH, WHICH ARE RECORDED IN LIBER
14114, PAGE(S) 554-576 OF RECORDS OF THIS COUNTY.

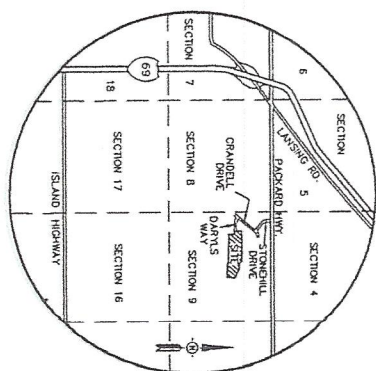
UNPLATTED



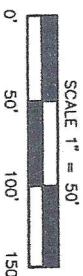
SEE SHEET 1



CURVE	RADIUS	LENGTH	CHORD	BEARING	DELTA
3	233.00'	364.42'	328.40'	N43°39'51\"W	69°26'46\"
4	167.00'	263.61'	237.08'	N44°04'44\"W	90°26'32\"



LOCATION MAP
NO SCALE



UNPLATTED

- LEGEND:
- 1.) ALL DIMENSIONS ARE IN FEET AND DECIMALS THEREOF.
 - 2.) STEEL BARS 1/2" IN DIAMETER 36" LONG ENCASED IN CONCRETE 4" IN DIAMETER HAVE BEEN PLACED AT ALL CORNERS MARKED "C".
 - 3.) STEEL BARS 1/2" IN DIAMETER 36" LONG ENCASED IN CONCRETE 4" IN DIAMETER HAVE BEEN FOUND AT ALL CORNERS MARKED "C".
 - 4.) LOT CORNERS HAVE BEEN MARKED WITH STEEL BARS 1/2" IN LENGTH BY 1/2" IN DIAMETER WITH A PLASTIC CAP MARKED "KBS 25802 31588 41098".
 - 5.) ALL CURVE DIMENSIONS ARE ARC MEASUREMENTS.
 - 6.) ALL BEARINGS ARE DERIVED FROM THE NORTH LINE OF SECTION 9 WHICH IS RECORDED TO BEAR S89°50'00"E ON THE PLAT OF SANSTONE ESTATES, AS RECORDED IN LIBER 12 OF PLATS, PAGES 38 & 39, EATON COUNTY RECORDS.
 - 7.) "R" INDICATES RADIAL LOT LINE, "NR" INDICATES NON-RADIAL LOT LINE.
 - 8.) LOT LINES EXTEND TO THE WATER'S EDGE.

66428